

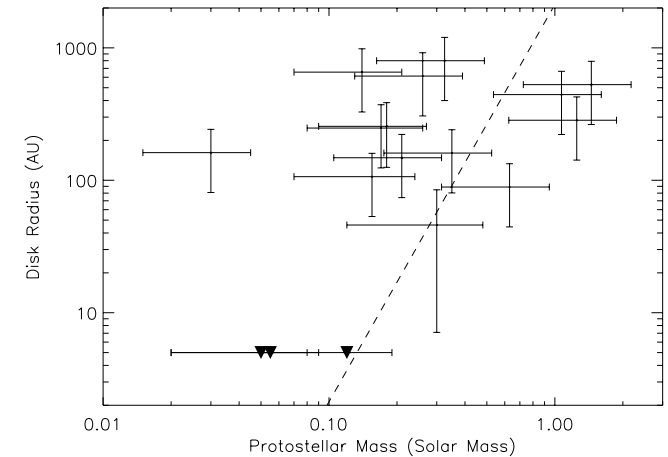
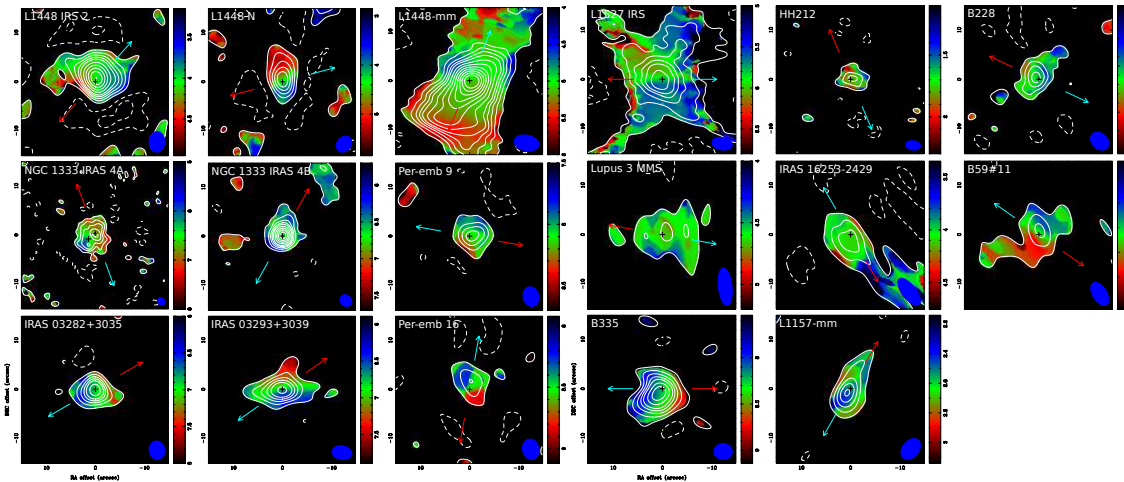
SMA Observations of Infall and Rotation around Class 0 Protostars To Investigate Disk Formation at the Early Evolutionary Stage

Hsi-Wei Yen et al. (ASIAA)

Q: Are circumstellar disks well developed around Class 0 protostars?

Method: Measure infall and rotation at 1000 AU scale with SMA at resolutions of 2'' to 8'' to infer the size of embedded disks.

Results:



Wide ranges of magnitude and orientation of velocity gradients observed.

Inferred disk sizes range from <5 AU to >500 AU.

Conclusion: The Class 0 stage is likely the stage to form large-scale disks.