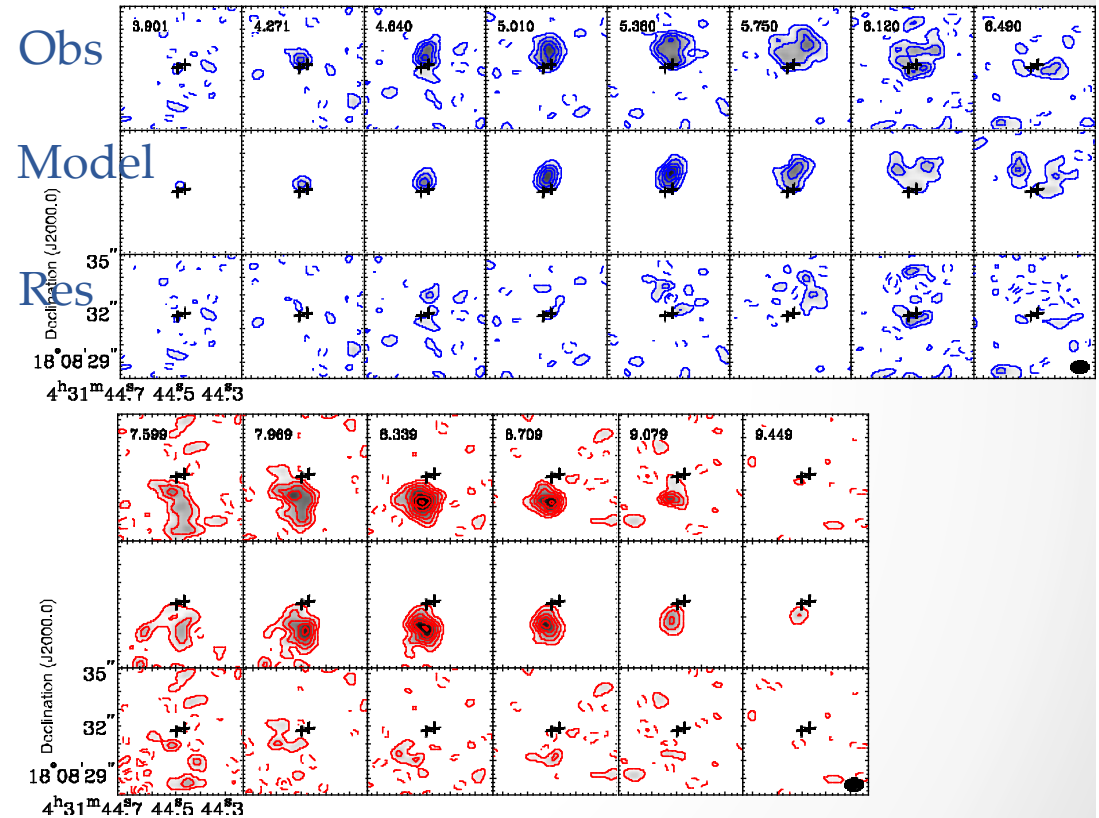
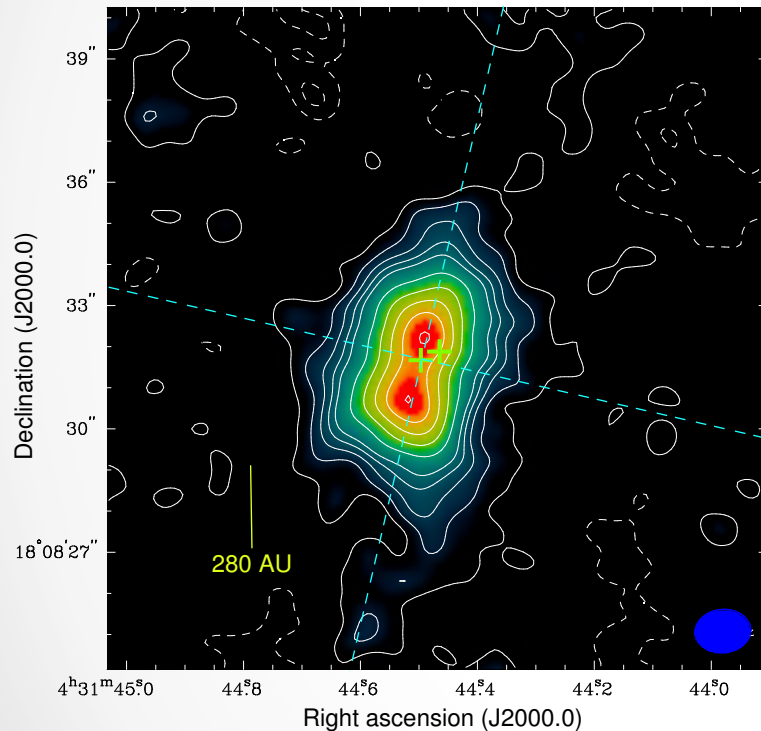


Direct SMA Imaging of the Transition from the Infalling Envelopes to the Keplerian Disks around L1551 IRS 5 and NE

Shigehisa Takakuwa (ASIAA) et al.

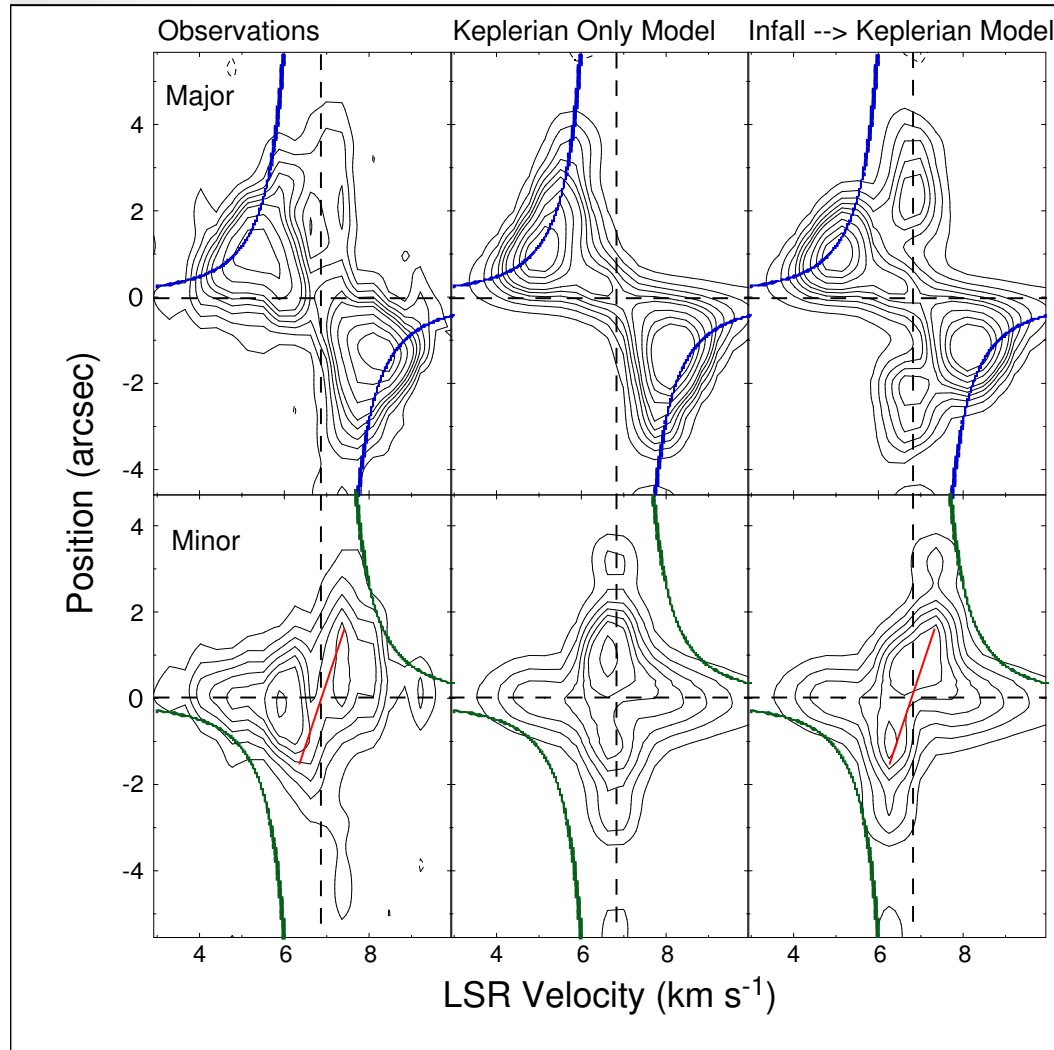
L1551 NE C¹⁸O (3-2) Moment 0 map



High Vel. ($> 0.5 \text{ km s}^{-1}$) Component
→ Keplerian Disk around $0.8 M_{\text{sun}}$

Low Vel. ($< 0.5 \text{ km s}^{-1}$) Component

→ Outer Infalling Envelope with the Decelerated Infalling Velocity ?



Keplerian-only model cannot explain the vel. grad. along the minor axis.

Infalling "ring" component,
 $r_{\text{kep}} \sim 300 \text{ AU}$
 $v_{\text{inf}} \sim 0.6 \text{ km s}^{-1}$
No rotation